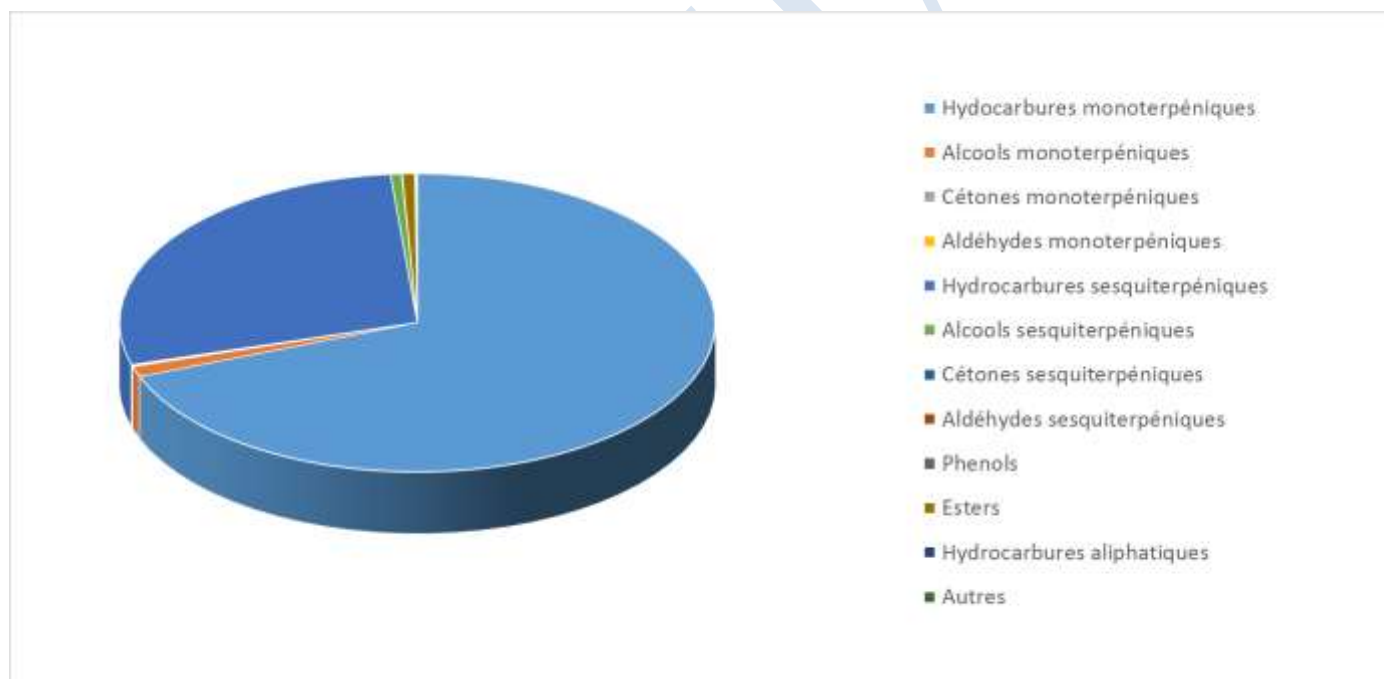


 <b>FLORIHANA</b> JE INTERNATIONAL	<b>ENREGISTREMENT DES BULLETINS          ANALYTIQUES : CHROMATOGRAPHIE          ESSENTIAL OIL CHROMATOGRAPHY          SHEET RECORDS</b>	7-2-ENR-005 v3	Page 1 sur 4
		Date d'application : 01/01/2013	
		Date de révision : 15/04/2022	

Date : 28/07/2022  
 Référence produit / Product reference : FLE070  
 Huile essentielle de / Essential oil of : Pin maritime / Pine Needle  
 Numéro de lot / Lot Number : B260722PT  
 Densité à 20°C (g/cm<sup>3</sup>) / Density to 20°C (g/cm<sup>3</sup>) : 0.8773  
 Indice de réfraction / Refractive index : 1.48195  
 Pouvoir rotatoire à 20°C / Optical rotation to 20°C : -27.68°  
 Mode de culture / Culture mode : Sauvage / wild  
 Pays / Country : Portugal  
 Date de production / Production date : 03/2022  
 D.L.U. / Shelf life : 04/2027  
 Mode d'extraction / Extraction mode : Distillation à la vapeur / Steam distillation  
 % Bio / % Organic : 100%  
 Nom Latin / Latin Name : Pinus pinaster  
 Parties utilisées / Used Parts : Bois / Wood



Molécule	%
SANTENE	0.013
TRICYCLENE	0.047
ALPHA-THUJENE	0.024
ALPHA-PINENE	33.609
BETA-PINENE	18.298
FENCHENE	0.041
CAMPHENE	0.476
THUJA-2,4(10)-DIENE	0.052
SABINENE	0.056
BETA-MYRCENE	5.687
ALPHA-PHELLANDRENE	0.053
BETA-PHELLANDRENE	0.792
DELTA-3-CARENE	2.499
ALPHA-TERPINENE	0.036
GAMMA-TERPINENE	0.062
TERPINOLENE	0.686
PARA-CYMENE	0.115
PARA-CYMENENE	0.057
<b>LIMONENE *</b>	3.711
1,8-CINEOLE (EUCALYPTOL)	0.365
CIS-BETA-OCIMENE	0.028
TRANS-BETA-OCIMENE	0.557
<b>LINALOL *</b>	0.094
ENDO-FENCHOL	0.056
ALPHA-CAMPHOLENAL	0.033
CAMPHRE	0.031
TRANS-PINOCAMPHONE	0.045
CIS-PINOCAMPHONE	0.027
TRANS-PINOCARVEOL	0.147
PINOCARVONE	0.024
TERPINENE-4-OL	0.06
ALPHA-TERPINEOL	0.746
MYRTENAL	0.077
THYMOL METHYL ETHER	0.071
ACETATE DE LINALYLE	0.12
ACETATE DE BORNYLE	0.06

TRIDECANE	0.058
ALPHA-CUBEBENE	0.352
BETA-CUBEBENE	0.132
ALPHA-LONGIPINENE	0.121
ALPHA-YLANGENE	0.140
ALPHA-COPAENE	0.643
BETA-COPAENE	0.294
BETA-BOURBONENE	0.071
<b>METHYL EUGENOL **</b>	0.026
LONGIFOLENE	1.087
BETA-CARYOPHYLLENE	9.858
ALPHA-CARYOPHYLLENE	1.426
AROMADENDRENE	0.026
TRANS-BETA-FARNESENE	0.180
TRANS-MUUROLA-3,5-DIENE	0.104
GAMMA-MUUROLENE	1.512
TRANS-MUUROLA-4(14),5-DIENE	0.263
ALPHA-MUUROLENE	0.577
EPI-ALPHA-MUUROLOL	0.049
TRANS-CADINA-1,(6)4-DIENE	0.216
GAMMA-CADINENE	0.783
DELTA-CADINENE	2.315
TRANS-CADINA-1,4-DIENE	0.103
ALPHA-CADINENE	0.219
EPI-ALPHA-CADINOL	0.12
ALPHA-CADINOL	0.065
ALPHA-AMORPHENE	0.136
GERMACRENE D	5.932
2-METHYL-BUTANOATE DE PHENYL-ETHYLE	0.1
3-METHYL-BUTANOATE DE PHENYL-ETHYLE	0.387
GAMMA-AMORPHENE	0.295
DELTA-AMORPHENE	0.233
CIS-CALAMENENE	0.235
SPATHULENOL	0.013
OXYDE DE CARYOPHYLLENE	0.304
ALPHA-COPAENE-OL	0.03
PALUSTRADIENE	0.391
LEVOPIMARADIENE	0.299



 <b>FLORIHANA</b> JE INTERNATIONAL	<b>ENREGISTREMENT DES BULLETINS          ANALYTIQUES : CHROMATOGRAPHIE          ESSENTIAL OIL CHROMATOGRAPHY          SHEET RECORDS</b>	7-2-ENR-005 v3	Page 4 sur 4
		Date d'application : 01/01/2013	
		Date de révision : 15/04/2022	

ABIETADIENE	0.847
NEO-ABIETADIENE	0.144
7-ISOPROPYL-1,1,4-TRIMETHYL-1,2,3,4,4,9,10,10- OCTAHYDROPHENANTHRENE	0.234
<b>Total</b>	<b>99.175</b>

- \* = Substance(s) allergène(s) / allergen(s)  
 \*\* = Substance(s) classée(s) CMR / Substance(s) classified as CMR

FLORIHANA

