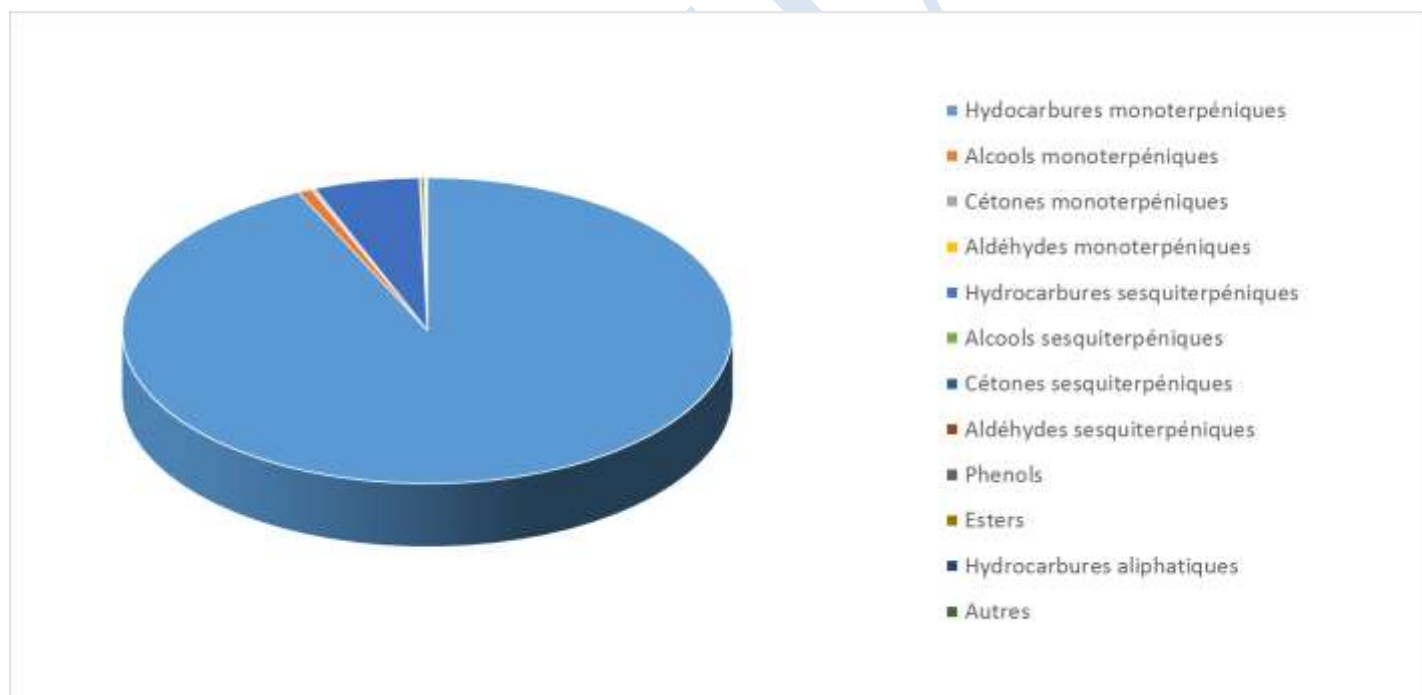


Date : 17/08/2022
 Référence produit / Product reference : FLE071
 Huile essentielle de / Essential oil of : Pin Sylvestre / Scots Pine
 Numéro de lot / Lot Number : A090822F
 Densité à 20°C (g/cm³) / Density to 20°C (g/cm³) : 0.8664
 Indice de réfraction / Refractive index : 1.47275
 Pouvoir rotatoire à 20°C / Optical rotation to 20°C : -12.28°
 Mode de culture / Culture mode : Sauvage / Wild
 Pays / Country : France
 Date de production / Production date : 03/2022
 D.L.U. / Shelf life : 04/2027
 Mode d'extraction / Extraction mode : Distillation à la vapeur / Steam distillation
 % Bio / % Organic : 100%
 Nom Latin / Latin Name : Pinus Sylvestris
 Parties utilisées / Used Parts : Aiguilles / Needles



Molécule	%
HEXANAL	0.070
OCTANE	0.020
TRICYCLENE	0.400
ALPHA-THUJENE	0.090
ALPHA-PINENE	58.570
BETA-PINENE	19.760
ALPHA-FENCHENE	0.050
CAMPHENE	2.110
VERBENENE	0.060
SABINENE	0.280
BETA-MYRCENE	4.130
ALPHA-PHELLANDRENE	0.070
DELTA-3-CARENE	1.220
ALPHA-TERPINENE	0.050
GAMMA-TERPINENE	0.070
TERPINOLENE	0.460
TERPINENE-4-OL	0.110
ALPHA-TERPINEOL	0.310
PARA-CYMENE	0.070
LIMONENE *	4.350
1,8-CINEOLE (EUCALYPTOL)	0.1
CIS-BETA-OCIMENE	0.02
TRANS-BETA-OCIMENE	0.43
2-OCTENAL	0.01
PERILLENE	0
NONANAL	0.06
FENCHOL	0.04
ALPHA-CAMPHOLENAL	0.04
CAMPHRE	0.07
TRANS-PINOCAMPHONE	0.05
CIS-PINOCAMPHONE	0.04
TRANS-PINOCARVEOL	0.09
PINOCARVONE	0.03
CARVONE	0.02
BORNEOL	0.07
MYRTENOL	0.1

VERBENONE	0.02
2-TRANS-DECENAL	0.020
ACETATE DE BORNYLE	0.130
2,4-DECADIENAL	0.020
ACETATE DE TERPINYLE	0.040
ALPHA-CUBEBENE	0.050
ALPHA-LONGIPINENE	0.020
ALPHA-YLANGENE	0.020
ALPHA-COPAENE	0.08
BETA-BOURBONENE	0.03
BETA-ELEMENE	0.08
EUGENOL-METHYL-ETHER	0.04
ALPHA-LONGIFOLENE	0.16
ALPHA-CEDRENE	0.050
BETA-CARYOPHYLLENE	1.220
ALPHA-CARYOPHYLLENE	0.190
OXYDE DE CARYOPHYLLENE	0.050
THUJOPSENE	0.370
AROMADENDRENE	0.030
GUAIA-6,9-DIENE	0.09
TRANS-BETA-FARNESENE	0.02
GAMMA-MUUROLENE	0.21
GERMACRENE D	1.05
BETA-SELINENE	0.1
ALPHA-AMORPHENE	0.24
GAMMA-CADINENE	0.36
DELTA-CADINENE	0.78
CEDROL	0.04
Total	98.93

* = Substance(s) allergène(s) / allergen(s)

** = Substance(s) classée(s) CMR / Substance(s) classified as CMR

