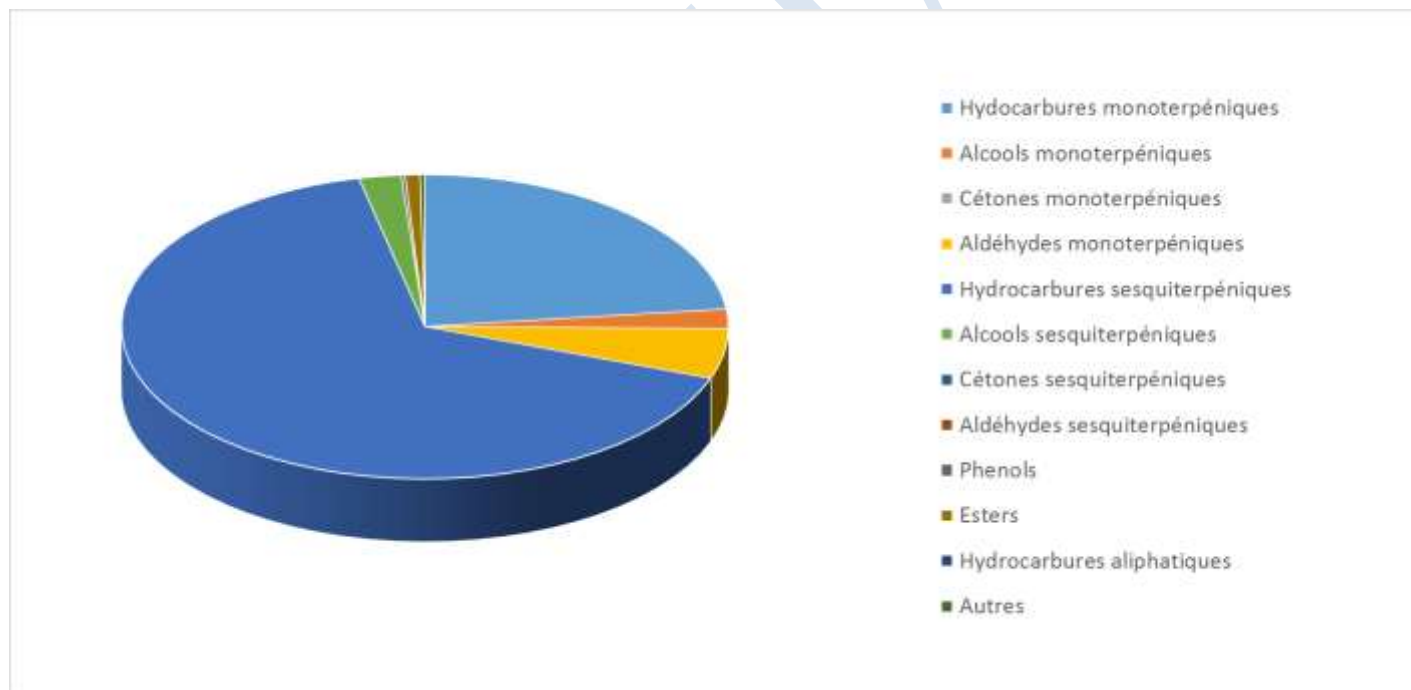


 FLORIHANA JE INTERNATIONAL	ENREGISTREMENT DES BULLETINS ANALYTIQUES : CHROMATOGRAPHIE ESSENTIAL OIL CHROMATOGRAPHY SHEET RECORDS	7-2-ENR-005 v3	Page 1 sur 3
		Date d'application : 01/01/2013	
		Date de révision : 15/04/2022	

Date : 23/05/2022
 Référence produit / Product reference : FLE115
 Huile essentielle de / Essential oil of : Gingembre / Ginger
 Numéro de lot / Lot Number : AJ230522MG
 Densité à 20°C (g/cm³) / Density to 20°C (g/cm³) : 0.881
 Indice de réfraction / Refractive index : 1.4891
 Pouvoir rotatoire à 20°C / Optical rotation to 20°C : -28.7°
 Mode de culture / Culture mode : Cultivé / Cultivated
 Pays / Country : Madagascar
 Date de production / Production date : 04/2022
 D.L.U. / Shelf life : 05/2027
 Mode d'extraction / Extraction mode : Distillation à la vapeur / Steam distillation
 % Bio / % Organic : 100%
 Nom Latin / Latin Name : Zingiber Officinale
 Parties utilisées / Used Parts : Rhizome





Molécule	%
TRICYCLEN	0.150
ALPHA-PINENE	2.670
BETA-PINENE	0.340
CAMPHENE	8.390
SABINENE	0.070
DELTA-3-CARENE	0.050
BETA-MYRCENE	1.370
ACETATE DE CITRONELLYLE	0.030
GAMMA-TERPINENE	0.040
TERPINOLENE	0.240
TERPINENE-4-OL	0.080
LIMONENE *	1.440
BETA-PHELLANDRENE	4.180
1,8-CINEOLE (EUCALYPTOL)	3.210
PARA-CYMENE	0.110
METHYL HEPTENONE	0.220
BETA-ELEMENE	0.580
DELTA-ELEMENE	0.070
CITRONELLAL	0.330
ALPHA-COPAENE	0.400
CAMPHRE	0.05
ALPHA-GURJUNENE	0.07
BENZALDEHYDE	0.03
LINALOL *	0.27
ACETATE DE LINALYLE	0.22
AROMADENDRENE	0.15
BETA-CARYOPHYLLENE	0.08
ALPHA-CARYOPHYLLENE	0.28
NERAL *	3.19
ALPHA-TERPINEOL	0.58
BORNEOL	0.84
GERMACRENE D	1.29
GERMACRENE B	0.59
ALPHA-SELINENE	2.26
BETA-SELINENE	1.24
ALPHA-ZINGIBERENE	28.97



ZINGIBERENOL	0.09
GERANIAL *	1.550
ACETATE DE GERANYLE	0.510
GERANIOL *	0.180
BETA-BISABOLENE	5.740
ALPHA-BISABOLOL	0.400
BETA-BISABOLOL	0.130
TRANS-TRANS-ALPHA-FARNESENE	5.280
Ar-CURCUMENE	10.69
BETA-SESQUIPELLANDRENE	5.3
NEROL	0.03
TRANS-NEROLIDOL	0.47
ELEMOL	0.2
BETA-SESQUIPELLANDROL	0.130
SPATHULENOL	0.410
EUGENOL *	0.190
HIMACHALOL	0.130
BETA-EUDESOL	0.410
Total	95.920

* = Substance(s) allergène(s) / allergen(s)

** = Substance(s) classée(s) CMR / Substance(s) classified as CMR

