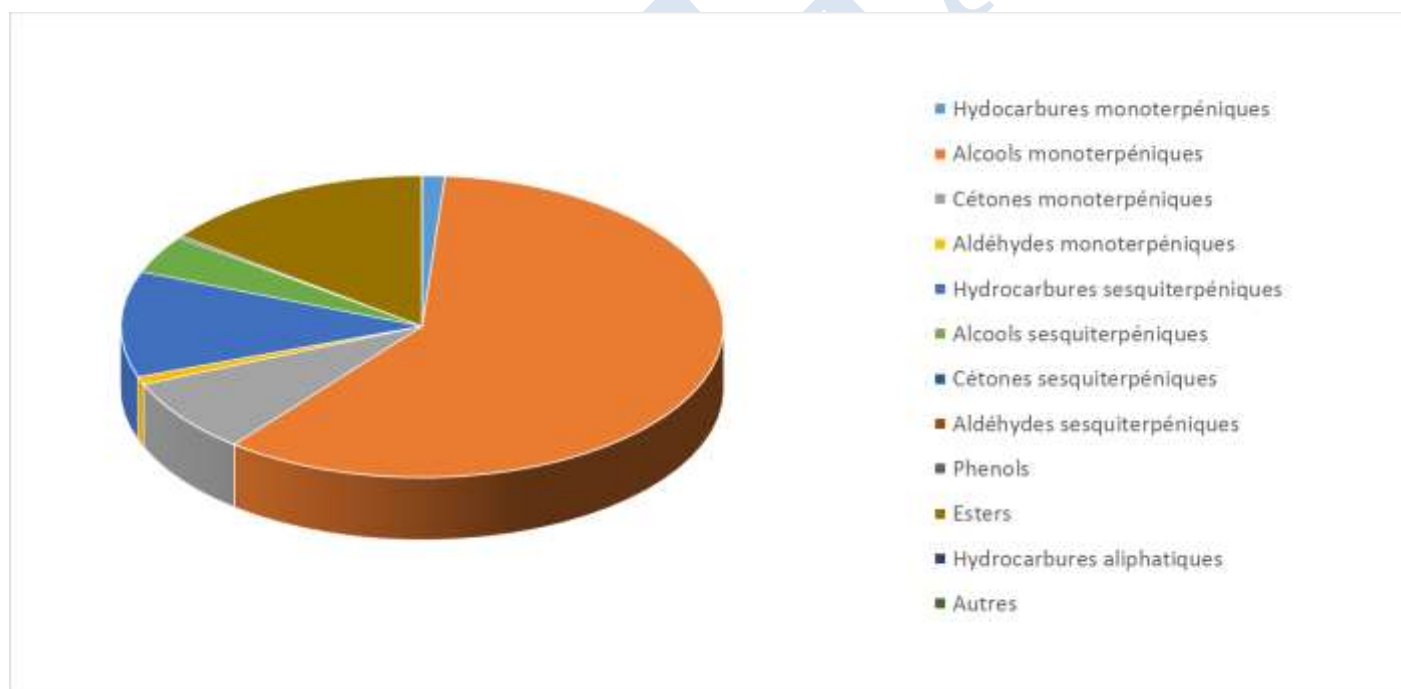


 FLORIHANA JE INTERNATIONAL	ENREGISTREMENT DES BULLETINS ANALYTIQUES : CHROMATOGRAPHIE ESSENTIAL OIL CHROMATOGRAPHY SHEET RECORDS	7-2-ENR-005 v3	Page 1 sur 4
		Date d'application : 01/01/2013	
		Date de révision : 15/04/2022	

Date : 02/06/2022
 Référence produit / Product reference : FLE145
 Huile essentielle de / Essential oil of : Geranium Rosat
 Numéro de lot / Lot Number : B010622EG
 Densité à 20°C (g/cm³) / Density to 20°C (g/cm³) : 0.8899
 Indice de réfraction / Refractive index : 1.46609
 Pouvoir rotatoire à 20°C / Optical rotation to 20°C : -9.02°
 Mode de culture / Culture mode : Cultivé / cultivated
 Pays / Country : Egypte / Egypt
 Date de production / Production date : 09/2021
 D.L.U. / Shelf life : 10/2026
 Mode d'extraction / Extraction mode : Distillation à la vapeur / Steam distillation
 % Bio / % Organic : 100%
 Nom Latin / Latin Name : Pelargonium X. Asperum
 Parties utilisées / Used Parts : Sommités Fleuries / Flowering Tops



Molécule	%
ALPHA-PINENE	0.283
BETA-PINENE	0.013
6-METHYL-5-HEPTENE-2-ONE	0.022
BETA-MYRCENE	0.170
TRANS-DEHYDROXY-OXYDE DE LINALOL	0.035
CIS-OXYDE DE LINALOL	0.216
TRANS-OXYDE DE LINALOL	0.115
LINALOL *	4.620
ALPHA-PHELLANDRENE	0.086
PARA-MENTHENE	0.019
PARA-CYMENE	0.086
LIMONENE *	0.162
BETA-PHELLANDRENE	0.058
1,8-CINEOLE (EUCALYPTOL)	0.017
CIS-BETA-OCIMENE	0.087
TRANS-BETA-OCIMENE	0.111
GAMMA-TERPINENE	0.021
TERPINOLENE	0.033
6-METHYL-3,5-HEPTADIENE-2-ONE	0.028
CIS-OXYDE DE ROSE	1.415
TRANS-OXYDE DE ROSE	0.571
PHOTO-CITRAL A	0.088
CITRONELLAL	0.183
MENTHONE	1.511
ISO-MENTHONE	6.031
BORNEOL	0.028
ACETATE DE BORNYLE	0.009
ISO-MENTHOL	0.155
ALPHA-TERPINEOL	0.279
NEROL	0.324
CITRONELLOL *	34.816
FORMATE DE CITRONELLYLE	7.644
ACETATE DE CITRONELLYLE	0.595
NERAL *	0.234
GERANIOL *	13.629
GERANIAL *	0.367

FORMATE DE GERANYLE	2.554
PIPERITONE	0.036
FORMATE DE NERYLE	0.072
BICYCLOELEMENE	0.296
PROPANOATE DE 2-PHENYL-ETHYLE	0.016
ISOBUTANOATE DE 2-PHENYL-ETHYLE	0.033
ALPHA-YLANGENE	0.069
ACETATE DE GERANYLE	0.364
ALPHA-COPAENE	0.616
BETA-BOURBONENE	1.444
1,5-DI-EPI-BOURBONENE	0.024
ALPHA-GURJUNENE	0.103
BETA-YLANGENE	0.403
BETA-CARYOPHYLLENE	1.390
ALPHA-CARYOPHYLLENE	0.362
ALPHA-TRANS-BERGAMOTENE	0.040
BETA-COPAENE	0.237
GUAIA-6,9-DIENE	0.468
CIS-CADINA-1,(6)4-DIENE	0.375
GAMMA-CADINENE	0.324
DELTA-CADINENE	1.649
GAMMA-MUUROLENE	0.219
ALPHA-AMORPHENE	0.059
GERMACRENE D	0.366
VIRIDIFLORENE	0.465
BICYCLOGERMACRENE	0.484
GAMMA-AMORPHENE	0.396
CIS-DIHYDROAGAROFURAN	0.104
CIS-CALAMENENE	0.543
BETA-CALACORENE	0.106
TRANS-CADINA-1,4-DIENE	0.291
BUTANOATE DE GERANYLE	0.958
TIGLATE DE GERANYLE	0.453
ISO-HEXANOATE DE GERANYLE	0.093
HEXANOATE DE GERANYLE	0.022
ALPHA-AGAROFURANE	0.346
4-HYDROXY-DIHYDRO-ALPHA- AGAROFURANE	0.116



FUROPÉLARGONE	0.204
TIGLATE DE PHENYL-ETHYLE	0.680
OXYDE DE CARYOPHILLENE	0.095
PENTANOATE DE CITRONNELLYLE	0.16
TIGLATE DE CITRONNELLYLE	0.21
ISO-HEXANOATE DE CITRONNELLYLE	0.058
1,10-DI-EPI-CUBENOL	0.142
10-EPI-GAMMA-EUDESOL	3.464
GAMMA-EUDESOL	0.074
7-EPI-BETA-EUDESOL	0.127
HINESOL	0.123
VALERIANOL	0.127
Total	95.421

- * = Substance(s) allergène(s) / allergen(s)
 ** = Substance(s) classée(s) CMR / Substance(s) classified as CMR

