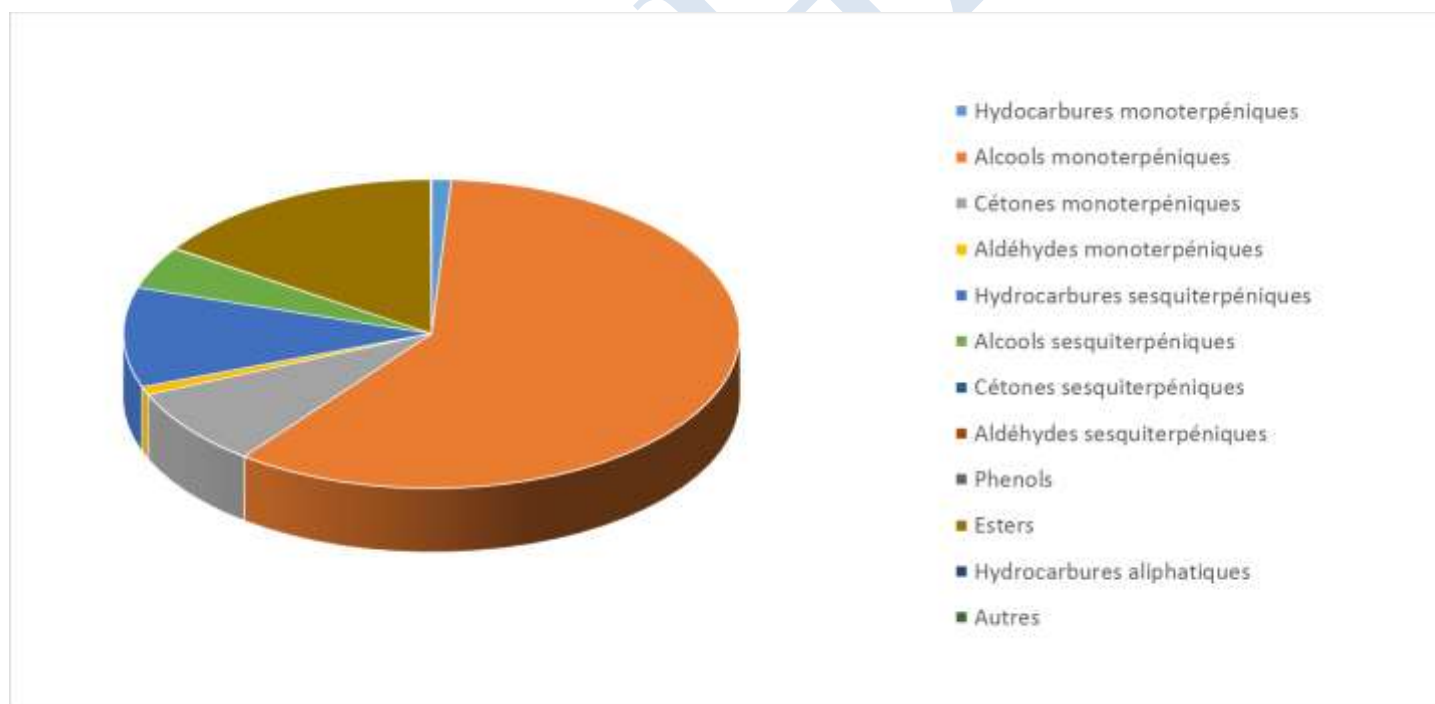


 FLORIHANA JE INTERNATIONAL	ENREGISTREMENT DES BULLETINS ANALYTIQUES : CHROMATOGRAPHIE ESSENTIAL OIL CHROMATOGRAPHY SHEET RECORDS	7-2-ENR-005 v3	Page 1 sur 4
		Date d'application : 01/01/2013	
		Date de révision : 15/04/2022	

Date	:	06/02/2023
Référence produit / Product reference	:	FLE145
Huile essentielle de / Essential oil of	:	Geranium Rosat
Numéro de lot / Lot Number	:	H270123EG
Densité à 20°C (g/cm ³) / Density to 20°C (g/cm ³)	:	0.894
Indice de réfraction / Refractive index	:	1.4692
Pouvoir rotatoire à 20°C / Optical rotation to 20°C	:	-11.10°
Mode de culture / Culture mode	:	Cultivé / cultivated
Pays / Country	:	Egypte / Egypt
Date de production / Production date	:	09/2022
D.L.U. / Shelf life	:	10/2027
Mode d'extraction / Extraction mode	:	Distillation à la vapeur / Steam distillation
% Bio / % Organic	:	100%
Nom Latin / Latin Name	:	Pelargonium X. Asperum
Parties utilisées / Used Parts	:	Sommités Fleuries / Flowering Tops



Molécule	%
ALPHA-PINENE	0.218
2,2,6-TRIMETHYL-6-VINYL-TETRAHYDROPYRANE	0.031
6-METHYL-5-HEPTENE-2-ONE	0.041
BETA-MYRCENE	0.125
TRANS-DEHYDROXY-OXYDE DE LINALOL	0.034
CIS-DEHYDROXY-OXYDE DE LINALOL	0.021
CIS-OXYDE DE LINALOL	0.214
TRANS-OXYDE DE LINALOL	0.119
LINALOL *	4.819
ALPHA-PHELLANDRENE	0.055
BETA-PHELLANDRENE	0.043
ALPHA-TERPINENE	0.008
GAMMA-TERPINENE	0.022
TERPINOLENE	0.024
PARA-CYMENE	0.087
LIMONENE *	0.144
1,8-CINEOLE (EUCALYPTOL)	0.039
CIS-BETA-OCIMENE	0.089
TRANS-BETA-OCIMENE	0.127
MELONAL	0.009
6-METHYL-3,5-HEPTADIENE-2-ONE	0.094
CIS-OXYDE DE ROSE	1.305
TRANS-OXYDE DE ROSE	0.595
PHOTO-CITRAL A	0.092
PHOTO-CITRAL B	0.017
CITRONELLAL	0.169
CITRONELLOL	34.440
FORMATE DE CITRONELLYLE	6.910
ACETATE DE CITRONELLYLE	0.399
MENTHONE	2.144
ISO-MENTHONE	5.430
ISOPULEGOL-ISO	0.130
ALPHA-PHELLANDREN-8-OL	0.024
BORNEOL	0.028
TERPINENE-4-OL	0.066
ALPHA-TERPINEOL	0.296



ISO-MENTHOL	0.154
NEROL	0.312
NERAL *	0.292
GERANIOL *	13.639
GERANIAL *	0.341
PIPERITONE	0.155
FORMATE DE NERYLE	0.065
FORMATE DE GERANYLE	2.489
ACIDE CITRONELLIQUE	0.063
PROPANOATE DE LINALYLE	0.018
ALPHA-YLANGENE	0.089
BICYCLOELEMENE	0.302
GAMMA-ELEMENE	0.049
ACETATE DE GERANYLE	0.372
ALPHA-COPAENE	0.575
BETA-COPAENE	0.246
BETA-BOURBONENE	1.175
ISOBUTANOATE DE 2-PHENYL-ETHYLE	0.030
ALPHA-GURJUNENE	0.087
BETA-YLANGENE	0.413
BETA-CARYOPHYLLENE	1.351
ALPHA-CARYOPHYLLENE	0.338
PROPANOATE DE CITRONNELLYLE	0.415
GUAIA-6,9-DIENE	0.448
PROPANOATE DE NERYLE	0.904
TRANS-CADINA-1,(6)4-DIENE	0.290
GAMMA-MUUROLENE	0.213
GERMACRENE D	0.312
DELTA-SELINENE	0.054
VIRIDIFLORENE	0.456
ALPHA-MUUROLENE	0.410
TRANS-TRANS-ALPHA-FARNESENE	0.075
GAMMA-AMORPHENE	0.344
CIS-DIHYDROAGAROFURAN	0.111
GAMMA-CADINENE	0.361
DELTA-CADINENE	1.245
TRANS-CADINA-1,4-DIENE	0.346



ALPHA-CADINENE	0.043
BUTANOATE DE CITRONNELLYLE	0.437
CIS-CALAMENENE	0.384
BETA-CALACORENE	0.106
ZONARENE	0.165
FUROPALGONE	0.052
BUTANOATE DE GERANYLE	0.974
ALPHA-AGAROFURANE	0.348
TIGLATE DE PHENYLETHYLE	0.710
OXYDE DE CARYOPHYLLENE	0.070
3-METHYL-BUTANOATE DE GERANYLE	0.109
2-METHYL-BUTANOATE DE GERANYLE	0.155
1,10-DI-EPI-CUBENOL	0.158
10-EPI-GAMMA-EUDESOL	3.464
PENTANOATE DE CITRONNELLYLE	0.120
ISO-HEXANOATE DE CITRONNELLYLE	0.091
HEPTANOATE DE CITRONNELLYLE	0.016
1-EPI-CUBENOL	0.092
GAMMA-EUDESOL	0.072
HINESOL	0.145
ALPHA-CADINOL	0.343
7-EPI-ALPHA-EUDESOL	0.144
4-HYDROXY-DIHYDRO-ALPHA-AGAROFURANE	0.134
TIGLATE DE GERANYLE	0.486
ISO-HEXANOATE DE GERANYLE	0.067
HEXANOATE DE GERANYLE	0.028
ACIDE PALMITIQUE	0.013
ACIDE LINOLEIQUE	0.015
ACIDE LINOLENIQUE	0.122
Total	96.010

* = Substance(s) allergène(s) / allergen(s)

** = Substance(s) classée(s) CMR / Substance(s) classified as CMR

