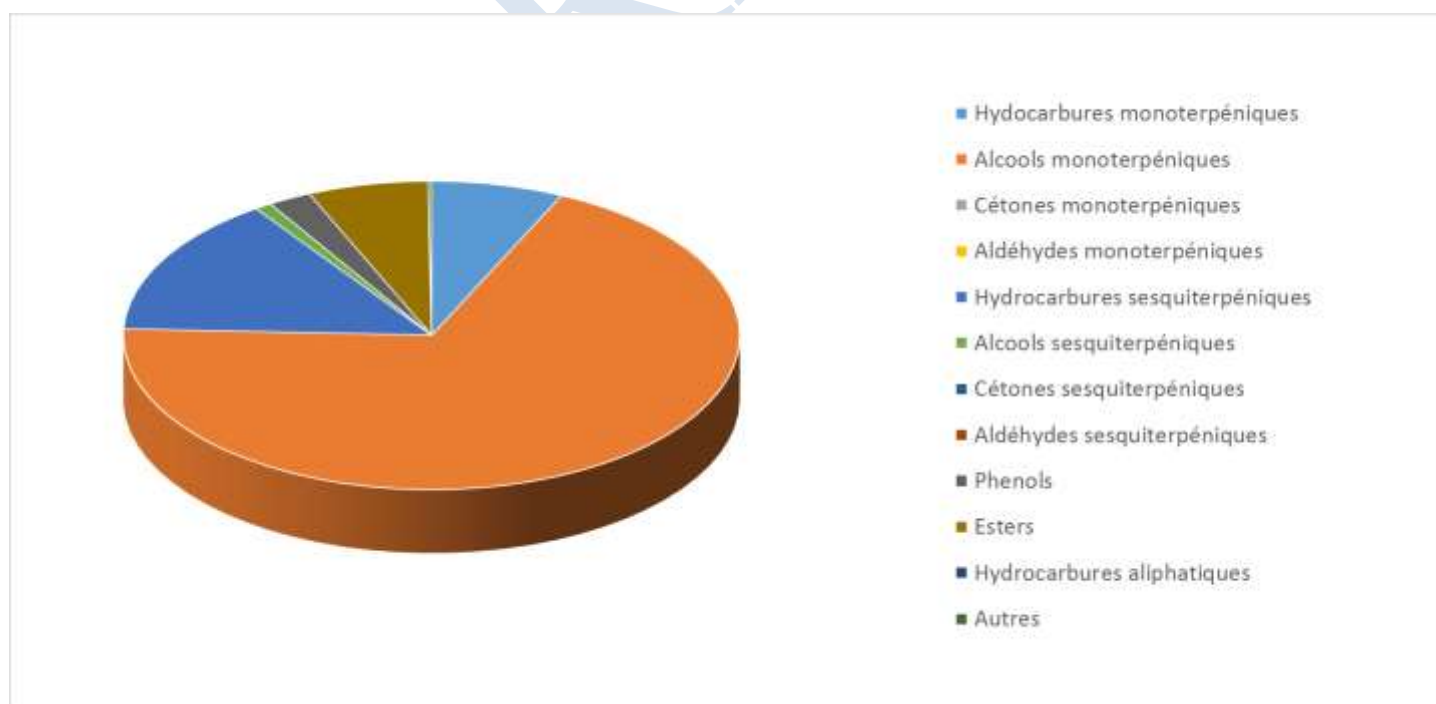
 FLORIHANA	ENREGISTREMENT DES BULLETINS ANALYTIQUES : CHROMATOGRAPHIE ESSENTIAL OIL CHROMATOGRAPHY SHEET RECORDS	FORM-LAB005-B	Page 1 sur 3
JE INTERNATIONAL		Date d'entrée en vigueur / taking effect : 10/06/2011	

Date : 25/07/2022
 Référence produit / Product reference : FLJ007
 Huile essentielle de / Essential oil of : Magnolia
 Numéro de lot / Lot Number : H250722CN
 Densité à 20°C (g/cm³) / Density to 20°C (g/cm³) : 0.884
 Indice de réfraction / Refractive index : 1.486
 Pouvoir rotatoire à 20°C / Optical rotation to 20°C : -8.15°
 Mode de culture / Culture mode : Cultivé / Cultivated
 Pays / Country : Chine / China
 Date de production / Production date : 11/2021
 D.L.U. / Shelf life : 12/2026
 Mode d'extraction / Extraction mode : Distillation à la vapeur / Steam distillation
 Nom Latin / Latin Name : Michelia alba
 Parties utilisées / Used Parts : Fleur / Flowers



Molécule	%
2-METHYLBUTANOATE DE METHYLE	5.437
ALPHA-PINENE	0.143
BETA-PINENE	0.381
CAMPHENE	0.057
2,6,6-TRIMETHYL-2-ETHENYLTETRAHYDRO-2-PYRAN	0.014
BETA-MYRCENE	0.072
ALPHA-TERPINENE	0.031
GAMMA-TERPINENE	0.056
TERPINOLENE	0.043
TERPINENE-4-OL	0.060
ALPHA-TERPINEOL	0.486
PARA-CYMENE	0.036
LIMONENE *	0.118
1,8-CINEOLE (EUCALYPTOL)	0.329
CIS-BETA-OCIMENE	2.038
TRANS-BETA-OCIMENE	3.100
CIS-OXYDE DE LINALOL	0.123
TRANS-OXYDE DE LINALOL	0.152
LINALOL *	64.253
HOTRIENOL	0.177
ALCOOL PHENYLETHYLIQUE	0.108
ALLO-OCIMENE	0.23
BORNEOL	0.036
ESTRAGOLE **	0.085
NEROL	0.053
GERANIOL *	0.256
ACETATE DE 2-PHENYLETHYLE	0.047
ACETATE DE TRANS OXYDE DE LINALOL	0.119
SAFROLE **	0.036
ALPHA-CUBEBENE	0.053
ALPHA-COPAENE	0.427
BETA-ELEMENE	3.285
METHYL EUGENOL **	1.728
METHYLISOEUGENOL	0.438
ALPHA-SANTALENE	0.102
BETA-CARYOPHYLLENE	2.701



ALPHA-CARYOPHYLLENE	0.85
ALPHA-TRANS-BERGAMOTENE	0.239
AROMADENDRENE	0.047
ALLO-AROMADENDRENE	0.013
TRANS-BETA-FARNESENE	0.066
TRANS-CADINA-1,(6)4-DIENE	0.093
GAMMA-MUUROLENE	0.188
ALPHA-AMORPHENE	0.059
GERMACRENE D	0.628
2-METHYLBUTANOATE DE 2-PHENYLETHYLE	0.223
BETA-SELINENE	1.546
ALPHA-SELINENE	1.468
BETA-BISABOLENE	0.419
GAMMA-CADINENE	0.152
DELTA-CADINENE	1.187
TRANS-CADINA-1,4-DIENE	0.189
BETA-SESQUIPELLANDRENE	0.102
CIS-CALAMENENE	0.152
TRANS-ALPHA-BISABOLENE	0.031
ALPHA-CALACORENE	0.061
TRANS-NEROLIDOL	0.268
OXYDE DE CARYOPHYLLENE	0.418
HUMULENE -1,2-EPOXYDE	0.086
1-EPI-CUBENOL	0.160
HEXANOATE DE PHENYLETHYLE	0.221
SELIN-11-ENE-4-ALPHA-OL	0.424
Total	96.100

* = Substance(s) allergène(s) / allergen(s)

** = Substance(s) classée(s) CMR / Substance(s) classified as CMR