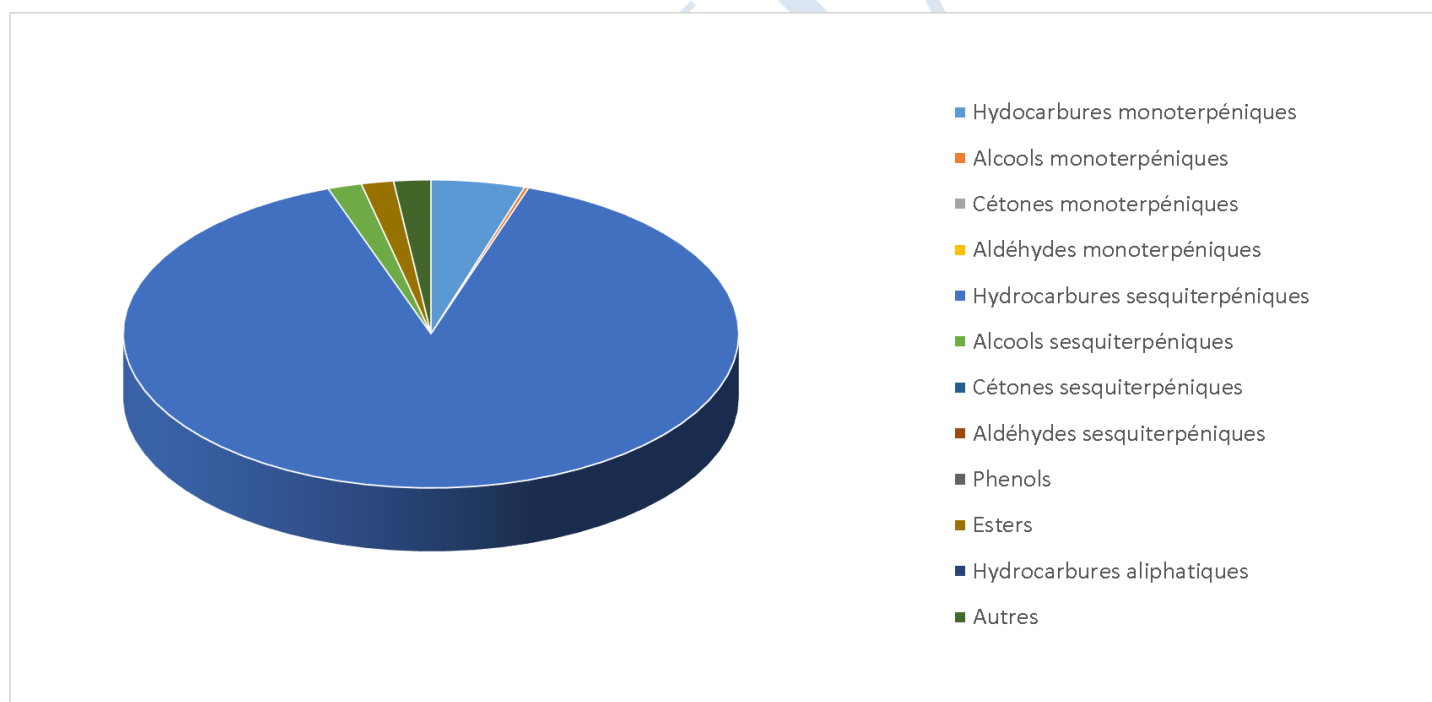



 JE INTERNATIONAL	ENREGISTREMENT DES BULLETINS ANALYTIQUES : CHROMATOGRAPHIE ESSENTIAL OIL CHROMATOGRAPHY SHEET RECORDS	FORM-LAB005-B	Page 1 sur 3
		Date d'entrée en vigueur / taking effect : 10/06/2011	

Date : 29/10/2018
 Référence produit / Product reference : FLJ118
 Huile essentielle de / Essential oil of : Manuka
 Numéro de lot / Lot Number : B291018AU
 Densité à 20°C (g/cm³) / Density to 20°C (g/cm³) : 0.9714
 Indice de réfraction / Refractive index : 1.50267
 Pouvoir rotatoire à 20°C / Optical rotation to 20°C : -19.45°
 Mode de culture / Culture mode : Sauvage / Wild
 Pays / Country : Australie / Australia
 Date de production / Production date : mars-18
 D.L.U. / Shelf life : avr.-23
 Mode d'extraction / Extraction mode : Distillation à la vapeur / Steam distillation
 Naturel / Natural : Non Bio / Not Organic
 Nom Latin / Latin Name : Leptospermum scoparium
 Parties utilisées / Used Parts : Feuilles / Leaves



Molécule	%
ALPHA-PINENE	0.928
BETA-PINENE	0.1
MYRCENE	0.333
ACETATE DE CIS-3-HEXENYLE	0.036
PARA-CYMENE	0.113
LIMONENE *	0.068
1,8-CINEOLE (EUCALYPTOL)	0.103
GAMMA-TERPINENE	0.08
TERPINOLENE	0.022
LINALOL *	0.053
3-METHYL-BUTANOATE DE 3-METHYL-BUTYLE	0.098
3-METHYL-BUTANOATE DE 2-METHYL-BUTYLE	0.035
3-METHYL-BUTANOATE DE 3-METHYL-BUT-3-ENYLE	0.199
TRANS-PINOCARVEOL	0.029
TERPINENE-4-OL	0.025
SALICYLATE DE METHYLE	0.086
SALICYLATE D'ETHYLE	0.044
ALPHA-CUBEBENE	2.258
ALPHA-YLANGENE	0.278
ALPHA-COPAENE	5.18
BETA-ELEMENE	0.435
3-METHYL-BUTANOATE DE BENZYLE	0.139
ALPHA-GURGUNENE	0.827
BETA-CARYOPHYLLENE	1.951
AROMADENDRENE	2.253
ALPHA-GUAIENE	0.042
CIS-MUUROLA-3.5-DIENE	2.661
ALPHA-HUMULENE	0.267
ALLO-AROMADENDRENE	0.701
TRANS-CADINA-1(6),4-DIENE	3.334
GAMMA-MUUROLENE	1.445
ALPHA-AMORPHENE	0.447
GERMACRENE D	0.086
DELTA-SELINENE	0.105
BETA-SELINENE	6.181
TRANS-MUUROLA-4(14),5-DIENE	0.621
ALPHA-MUUROLENE	1.798
ALPHA-SELINENE	4.547

 Florihana	ENREGISTREMENT DES BULLETINS ANALYTIQUES : CHROMATOGRAPHIE ESSENTIAL OIL CHROMATOGRAPHY SHEET RECORDS	FORM-LAB005-B	Page 3 sur 3
JE INTERNATIONAL		Date d'entrée en vigueur / taking effect : 10/06/2011	

GAMMA-CADINENE	0.681
DELTA-CADINENE	4.728
CIS-CALAMENENE	15.325
TRANS-CADINA-1,4-DIENE + FLAVESONE	10.656
ALPHA-CADINENE	0.169
ALPHA-CALOCRENE	0.607
SPATHULENOL	0.563
OXYDE DE CARYOPHYLLENE	0.729
GLOBULOL	0.256
ISO-LEPTOSPERMONE	5.326
LEPTOSPERMONE	17.19
1-EPI-CUBENOL	1.047
ALPHA-MUUROLOL	1.046
ALPHA-CADINOL	0.104
NEO-INTERMEDEOL	0.243
CADALENE	0.395
GRANDIFLORENE	0.372
Total	97.345

* = Substance(s) allergène(s) / allergen(s)

** = Substance(s) classée(s) CMR / Substance(s) classified as CMR